



Spare parts for:

Ovens



Suitable for:

# JUNO-RÖDER-SENKING



This catalogue is automatically generated.  
Therefore, the sequence of the items might  
not be always shown at best.

Updates will be issued in case of additions  
and/or amendments.

*Suitable universal spare parts may not be included*

Rel. 2013-11211645





## Axial motors

- 3340001 AXIAL VENTILATOR EBM 119x119x38 mm**  
ball bearings  
230V 50Hz 19W 2650rpm  
4656Z



JUNO-RÖDER-SENKING 780002656

## Cables for piezo igniters

- 3001002 SIT IGNITION LEAD 1000 mm**  
with faston 6.35x0.8 mm ignition  
with faston  $\varnothing$  4 mm for electrode



JUNO-RÖDER-SENKING

## Electrical gas valves and accessories

- 3526142 DOUBLE COIL FOR VALVE**  
220V 50Hz  
for VALVE 830 TANDEM-836 TANDEM



JUNO-RÖDER-SENKING 231872

- 3526090 ELETTROSIT VALVE  $\varnothing$  3/4"FF**  
inlet  $\varnothing$  3/4" F - outlet  $\varnothing$  3/4" F  
thermocouple connection M9x1  
maximum gas inlet pressure 50 mbar  
pressure adjustment range  
3 ÷ 18 mbar  
ambient temperature 0 ÷ 60°C  
power supply 230V 50Hz  
long buttons  
pilot connection and LATERAL thermocouple



JUNO-RÖDER-SENKING 203306



# JUNO-RÖDER-SENKING



Suitable for:

## 3526066 HONEYWELL VALVE V4400C ø 3/4"FF 220V

inlet ø 3/4"F - outlet ø 3/4"F  
thermocouple connection ASA pitch  
maximum gas inlet pressure 60 mbar  
room temperature 0÷70°C  
power supply 230V 50Hz  
for Convection oven gas



JUNO-RÖDER-SENKING 231908

JUNO-RÖDER-SENKING 231912

JUNO-RÖDER-SENKING 231913

Suitable for:

## 3526141 VALVE 830 TANDEM ø 1/2"FF

inlet ø 1/2"F - outlet ø 1/2"F  
thermocouple fitting M10x1  
maximum gas inlet pressure 60 mbar  
outlet gas pressure setting range 3÷50 mbar  
room temperature 0÷60°C  
power supply 230V 50Hz  
for Convection oven gas (ZANUSSI) - Series ACV  
Series ECV - Series FCS - Series FCV - Series NCV  
Series RCV - Series ZCV



JUNO-RÖDER-SENKING 231864

## Electronic boxes

### 3091017 CONTROL BOX S4560B1006

model HONEYWELL - 220/240V 50Hz 10VA  
for Convection oven electric (RATIONAL) CM101  
CM201

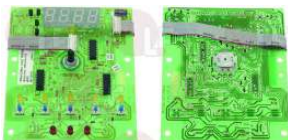


JUNO-RÖDER-SENKING

## Electronic printed-circuit boards

### 3390231 PIN ELECTRONIC BOARD 132x110 mm

for Convection oven electric (ZANUSSI) ACV/E10  
ACV/E201 - ACV/E202 - ACV/E6 - ECV/E10  
ECV/E201 - ECV/E202 - FCS061E - FCS101E  
FCS102E - FCS201E4 - FCS202E4 - FCV/E10  
FCV/E201 - FCV/E202 - FCV/E6 - NCV/E10  
NCV/E6 - RCV/E6 - RCVE101E4 - RCV061E2  
RCV101E2 - ZCV/E10 - ZCV/E201 - ZCV/E202  
ZCV/E6  
for Convection oven gas (ZANUSSI) ACV/G10  
ACV/G201 - ACV/G202 - ACV/G6 - ECV/G10  
ECV/G201 - ECV/G202 - ECV/G6 - FCS061G  
FCS101G - FCS102G - FCV/G10 - FCV/G201  
FCV/G202 - FCV/G6 - NCV/G10 - NCV/G6  
RCV061G2 - RCV101G2 - RCV101G4 - ZCV/G10  
ZCV/G201 - ZCV/G202 - ZCV/G6



JUNO-RÖDER-SENKING 02666

### 3390055 USER INTERFACE BOARD 210x110 mm

D-shaped pin ø 6x4.6 mm  
16-track connector  
for Convection oven electric (ZANUSSI) ACV/E10  
ACV/E201 - ACV/E202 - ACV/E6 - ECV/E201  
ECV/E202 - FCS061E - FCS101E - FCV/E10  
FCV/E20 - FCV/E201 - FCV/E202 - FCV/E6  
NCV/E10 - NCV/E6 - RCV061E2 - RCV101E2  
ZCV/E201 - ZCV/E202  
for Convection oven gas (ZANUSSI) ACV/G10  
ACV/G201 - ACV/G202 - ACV/G6 - ECV/G201  
ECV/G202 - ECV/G6 - FCS061G - FCS101G  
FCV/G10 - FCV/G20 - FCV/G201 - FCV/G202  
FCV/G6 - NCV/G10 - NCV/G6 - RCV061G2  
RCV101G2 - ZCV/G201 - ZCV/G202 - ZCV/G6



JUNO-RÖDER-SENKING 02665

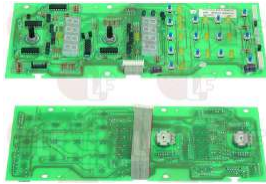


Suitable for:

Suitable for:

## 3390232 USER INTERFACE ELECTRONIC BOARD

dimensions 275x110 mm  
 for Convection oven electric (ZANUSSI) ACV/E10  
 ACV/E201 - ACV/E202 - ECV/E10 - ECV/E201  
 ECV/E202 - ECV/E6 - FCS061E - FCS101E  
 FCS102E - FCS201E - FCS202E - FCV/E201  
 FCV/E202 - FCV/E6 - RCV/E6 - RCVE101E4  
 ZCV/E10 - ZCV/E201 - ZCV/E202 - ZCV/E6  
 for Convection oven gas (ZANUSSI) ACV/G10  
 ACV/G201 - ACV/G202 - ACV/G6 - ECV/G201  
 ECV/G202 - ECV/G6 - FCS061G - FCS101G  
 FCS102G - FCV/G10 - FCV/G201 - FCV/G202  
 FCV/G6 - NCV/G10 - RCV061G2 - RCV101G4  
 ZCV/G10 - ZCV/G201 - ZCV/G202 - ZCV/G6

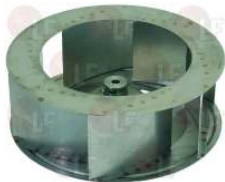


JUNO-RÖDER-SENKING 02725

## Fans for motors

### 3240289 FAN ø 280 mm

thickness 100 mm  
 total blades 6 - ø hole 10 mm  
 for Convection oven electric (ZANUSSI) ACF/E10  
 ACF/E102/1 - ACF/E20 - ACF/E202/1 - ACF/E6  
 ACV/E10C4 - ACV/E10C6 - ACV/E102/1C4  
 ACV/E102/1C6 - ACV/E6 - FCF/E6 - FCS061E  
 FCV/E6 - NCV/E6 - ZCF/E6  
 for Convection oven gas (ZANUSSI) ACF/G10  
 ACF/G102/1 - ACF/G6 - ACV/G10C4 - ACV/G10C6  
 ACV/G102/1C4 - ACV/G102/1C6 - ACV/G20C4  
 ACV/G202/1C4 - ACV/G6 - ACV/G61C3 - FCF/G6  
 FCS061G - FCV/G6 - JCF/G6 - NCV/G6 - ZCF/G6



JUNO-RÖDER-SENKING LF-4003560

## Gaskets and seals

### 3186067 HEATING ELEMENT GASKET

external dimensions 75x50 mm  
 for Convection oven (JUNO-RÖDER-SENKING)  
 for Convection oven (ZANUSSI)



JUNO-RÖDER-SENKING 55327

### 3186187 HEATING ELEMENT GASKET

external dimensions 68x13 mm



JUNO-RÖDER-SENKING 237353

JUNO-RÖDER-SENKING 246294

## Gaskets for oven door

- 3286022 OVEN DOOR GASKET - 24 m**  
 made of silicone elastomer  
 profile dimensions 21x15.5 mm  
 COLOUR BLACK  
 for Convection oven (ZANUSSI) - Series 55



JUNO-RÖDER-SENKING 246283

- 3286012 OVEN DOOR GASKET - 25 m**  
 made of silicone elastomer  
 profile dimensions 15x14 mm  
 COLOUR RED  
 for Convection oven (JUNO-RÖDER-SENKING)  
 for Convection oven (ZANUSSI)



JUNO-RÖDER-SENKING 253382

- 3286014 OVEN DOOR GASKET - 25 m**  
 made of silicone elastomer  
 profile dimensions 25x7.5 mm  
 COLOUR RED  
 for Convection oven (JUNO-RÖDER-SENKING)  
 for Convection oven (ZANUSSI)



JUNO-RÖDER-SENKING 253241

- 3286078 OVEN DOOR GASKET - 3 m**  
 made of silicone elastomer  
 profile dimensions 15x14 mm  
 COLOUR RED  
 for Convection oven (JUNO-RÖDER-SENKING)  
 for Convection oven (ZANUSSI)



JUNO-RÖDER-SENKING 253382

- 3286012 OVEN DOOR GASKET - 25 m**  
 made of silicone elastomer  
 profile dimensions 15x14 mm  
 COLOUR RED  
 for Convection oven (JUNO-RÖDER-SENKING)  
 for Convection oven (ZANUSSI)



JUNO-RÖDER-SENKING 253382

- 3286011 OVEN DOOR GASKET - 6 m**  
 made of silicone elastomer  
 profile dimensions 15x14 mm  
 COLOUR RED  
 for Convection oven (JUNO-RÖDER-SENKING)  
 for Convection oven (ZANUSSI)



JUNO-RÖDER-SENKING 253382



# JUNO-RÖDER-SENKING



Suitable for:

Suitable for:

- 3286079 OVEN DOOR GASKET - 3 m**  
made of silicone elastomer  
profile dimensions 25x7.5 mm  
COLOUR RED  
for Convection oven (JUNO-RÖDER-SENKING)  
for Convection oven (ZANUSSI)



JUNO-RÖDER-SENKING 253241

- 3286014 OVEN DOOR GASKET - 25 m**  
made of silicone elastomer  
profile dimensions 25x7.5 mm  
COLOUR RED  
for Convection oven (JUNO-RÖDER-SENKING)  
for Convection oven (ZANUSSI)



JUNO-RÖDER-SENKING 253241

- 3286013 OVEN DOOR GASKET - 6 m**  
made of silicone elastomer  
profile dimensions 25x7.5 mm  
COLOUR RED  
for Convection oven (JUNO-RÖDER-SENKING)  
for Convection oven (ZANUSSI)



JUNO-RÖDER-SENKING 253241

- 3286082 OVEN DOOR GASKET - 3 m**  
made of silicone elastomer  
profile dimensions 21x15.5 mm  
COLOUR BLACK  
for Convection oven (ZANUSSI) - Series 55



JUNO-RÖDER-SENKING 246283

- 3286022 OVEN DOOR GASKET - 24 m**  
made of silicone elastomer  
profile dimensions 21x15.5 mm  
COLOUR BLACK  
for Convection oven (ZANUSSI) - Series 55



JUNO-RÖDER-SENKING 246283

- 3286021 OVEN DOOR GASKET - 6 m**  
made of silicone elastomer  
profile dimensions 21x15.5 mm  
COLOUR BLACK  
for Convection oven (ZANUSSI) - Series 55



JUNO-RÖDER-SENKING 246283





Suitable for:

Suitable for:

**3286011 OVEN DOOR GASKET - 6 m**  
 made of silicone elastomer  
 profile dimensions 15x14 mm  
 COLOUR RED  
 for Convection oven (JUNO-RÖDER-SENKING)  
 for Convection oven (ZANUSSI)



JUNO-RÖDER-SENKING 253382

**3286013 OVEN DOOR GASKET - 6 m**  
 made of silicone elastomer  
 profile dimensions 25x7.5 mm  
 COLOUR RED  
 for Convection oven (JUNO-RÖDER-SENKING)  
 for Convection oven (ZANUSSI)



JUNO-RÖDER-SENKING 253241

**3286021 OVEN DOOR GASKET - 6 m**  
 made of silicone elastomer  
 profile dimensions 21x15.5 mm  
 COLOUR BLACK  
 for Convection oven (ZANUSSI) - Series 55



JUNO-RÖDER-SENKING 246283

**3186410 OVEN DOOR GASKET 1400x640 mm**  
 made of silicone elastomer  
 profile dimensions 24x20 mm  
 COLOUR BLACK  
 for Convection oven electric (ZANUSSI) FCF/E20  
 FCV/E20  
 for Convection oven gas (ZANUSSI) FCF/G20  
 FCV/G20



JUNO-RÖDER-SENKING 237389

**3786126 OVEN DOOR GASKET 610x430 mm**  
 made of silicone elastomer  
 profile dimensions 24x20 mm  
 COLOUR BLACK  
 for Convection oven gas (ZANUSSI) ACV/G6 - ECV/G6  
 FCS061G - FCS061GP - FCV/G6 - RCV061G2  
 ZCV/G6



JUNO-RÖDER-SENKING 237390

**3186386 OVEN DOOR GASKET 620x414 mm**  
 made of silicone elastomer  
 profile dimensions 23x13 mm  
 COLOUR BLACK  
 for Steam oven (JUNO-RÖDER-SENKING) - Series 55  
 for Steam oven (ZANUSSI) - Series 55



JUNO-RÖDER-SENKING 246252

JUNO-RÖDER-SENKING 246253



# JUNO-RÖDER-SENKING



Suitable for:

## 3186385 OVEN DOOR GASKET 699x620 mm

made of silicone elastomer  
profile dimensions 23x13 mm  
COLOUR BLACK  
for Steam oven (JUNO-RÖDER-SENKING) - Series 55  
for Steam oven (ZANUSSI) - Series 55



JUNO-RÖDER-SENKING 246257

Suitable for:

## 3186088 OVEN DOOR GASKET 730x665 mm

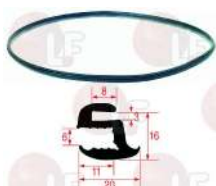
made of silicone elastomer  
profile dimensions 24x20 mm  
COLOUR BLACK  
for Convection oven (JUNO-RÖDER-SENKING) 5712-3-7  
for Convection oven electric (ZANUSSI) ACF/E10  
ACV/E10 - ECF/E10 - ECV/E10 - FCF/E10  
FCS101EP - FCS101EX - FCS101E2 - FCS101E4  
FCS102EP - FCS102EX - FCS102E4 - FCV/E10  
JCF/E10 - NCF/E10 - NCV/E10 - RCF/E10  
RCVE101E4 - RCV101E2 - ZCF/E10 - ZCV/E10  
for Convection oven gas (ZANUSSI) ACF/G10  
ACV/G10 - ECF/G10 - ECV/G10 - FCF/G10  
FCS101GP - FCS101GX - FCS101G2 - FCS101G4  
FCS102GP - FCS102GX - FCS102G4 - FCV/G10  
JCF/G10 - NCF/G10 - NCV/G10 - RCF102G



JUNO-RÖDER-SENKING 237387

## 3186407 OVEN GLASS GASKET 2000 mm

made of silicone elastomer  
profile dimensions 20x16 mm  
COLOUR BLACK  
for Convection oven electric (ZANUSSI) ACF/E10  
ACF/E20 - ACV/E10 - ACV/E201 - ACV/E202  
ECF/E10 - ECF/E20 - ECV/E10 - ECV/E201  
ECV/E202 - FCF/E10 - FCV/E10 - FCV/E201  
FCV/E202 - JCF/E10 - NCF/E10 - NCV/E10  
RCV101E2 - RCV101E4 - ZCF/E10 - ZCF/E20  
ZCV/E10  
for Convection oven gas (ZANUSSI) ACF/G10  
ACF/G20 - ACV/G10 - ACV/G201 - ACV/G202  
ECF/G10 - ECF/G20 - ECV/G10 - ECV/G201  
ECV/G202 - FCF/G10 - FCF/G20 - FCV/G10  
FCV/G201 - FCV/G202 - JCF/G10 - NCF/G10



JUNO-RÖDER-SENKING 002878

JUNO-RÖDER-SENKING 02878



## Handles

### 3242255 CENTRAL LOCK MECHANISM RIGHT

for OVEN  
 for Convection oven electric (COVEN) TEC10  
 TEC10MD - TEC10MX - TEC10P - TEC15 - TEC15MD  
 TEC15MX - TEC20 - TEC20MD  
 for Convection oven electric (SOLYMAC) SOLYMIX 10  
 SOLYP10  
 for Convection oven gas (COVEN) TEC10G - TEC10GMD  
 TEC10GP - TEC15G - TEC15GMD - TEC20G  
 TEC20GMD  
 for Electric oven (CAPIC) R220



JUNO-RÖDER-SENKING 280156

### 3242291 DOOR LOCK CENTRAL FOOT

for OVEN



JUNO-RÖDER-SENKING

### 3242593 KNOB ROLL HOLDER FOR LOCK.NUT



JUNO-RÖDER-SENKING

### 3242050 OVEN DOOR HANDLE 170x20 mm

with key lock  
 handle mounting distance 85 mm  
 for OVEN



JUNO-RÖDER-SENKING

### 3242053 OVEN HANDLE TOP/BOT.TIE ROD 400 mm

for OVEN



JUNO-RÖDER-SENKING

### 3242054 STRIKE FOR DOOR HANDLE

distance between mounting holes 33 mm  
 for OVEN



JUNO-RÖDER-SENKING



# JUNO-RÖDER-SENKING



Suitable for:

**3242051 OVEN DOOR HANDLE 176x28 mm**  
handle mounting holes distance 121 mm  
for OVEN



JUNO-RÖDER-SENKING 256074

JUNO-RÖDER-SENKING 266074

Suitable for:

**3242052 STRIKE FOR DOOR HANDLE**  
distance between mounting holes 33 mm  
for OVEN



JUNO-RÖDER-SENKING

**3242450 OVEN DOOR HANDLE 260x30 mm**  
handle mounting holes distance 122-133 mm  
for Convection oven electric (ZANUSSI) FCF/E10  
FCF/E6  
for Convection oven gas (ZANUSSI) FCF/G10 - FCF/G6



JUNO-RÖDER-SENKING 234663

**3242053 OVEN HANDLE TOP/BOT.TIE ROD 400 mm**  
for OVEN



JUNO-RÖDER-SENKING

**3242208 PIN FOR OVEN DOOR HANDLE M5x1**  
dimensions  $\varnothing$  9x45 mm  
for OVEN



JUNO-RÖDER-SENKING

**3242209 SPRING FOR DOOR HANDLE 123 mm**  
for OVEN



JUNO-RÖDER-SENKING

**3242117 SPRING FOR DOOR HANDLE 97 mm**  
for OVEN



JUNO-RÖDER-SENKING

**3242052 STRIKE FOR DOOR HANDLE**  
distance between mounting holes 33 mm  
for OVEN



JUNO-RÖDER-SENKING

**3242054 STRIKE FOR DOOR HANDLE**  
distance between mounting holes 33 mm  
for OVEN



JUNO-RÖDER-SENKING

## Heating elements

**3755239 CHAMBER HEATING ELEMENT 5600W 230V**  
 external  $\varnothing$  495 mm - overall height 65 mm  
 flange 80x45 mm  
 for Convection oven electric (ZANUSSI) ACF/E10  
 ACF/E20 - ACV/E10 - ACV/E201 - ACV/E202  
 ECF/E10 - ECV/E10 - ECV/E201 - ECV/E202  
 FCF/E10 - FCF/E20 - FCS101E - FCS102E  
 FCS201E - FCS202E - FCV/E10 - FCV/E20  
 FCV/E201 - FCV/E202 - JCF/E10 - NCF/E10  
 ZCF/E10 - ZCF/E20 - ZCV/E10 - ZCV/E201  
 ZCV/E202



JUNO-RÖDER-SENKING 02688

**3755238 CHAMBER HEATING ELEMENT 8000W 400V**  
 external  $\varnothing$  580 mm - overall height 70 mm  
 flange 80x45 mm  
 for Convection oven electric (ZANUSSI) ACF/E10  
 ACF/E20 - ACV/E10 - ACV/E201 - ACV/E202  
 ECF/E10 - ECV/E10 - ECV/E201 - ECV/E202  
 FCF/E10 - FCF/E20 - FCS101E - FCS102E  
 FCS201E - FCS202E - FCV/E10 - FCV/E20  
 FCV/E201 - FCV/E202 - JCF/E10 - NCF/E10  
 ZCF/E10 - ZCF/E20 - ZCV/E10 - ZCV/E201  
 ZCV/E202



JUNO-RÖDER-SENKING A5330

JUNO-RÖDER-SENKING 214100

**3355720 HEATING ELEMENT 1000W 220V**  
 immersed length 225 mm - width 60 mm  
 flange 80x28 mm - with receptacle hole  
 for Convection oven electric (JUNO-RÖDER-SENKING)  
 for Convection oven electric (ZANUSSI)



JUNO-RÖDER-SENKING 214610

JUNO-RÖDER-SENKING 231003

**3355724 HEATING ELEMENT 1000W 230V**  
 immersed length 450 mm - width 65 mm  
 flange 70x22 mm  
 for Convection oven electric (JUNO-RÖDER-SENKING)  
 for Convection oven electric (ZANUSSI)



JUNO-RÖDER-SENKING 214566

**3755171 HEATING ELEMENT 17000W 230V**  
 immersed depth 590 mm  
 flange external  $\varnothing$  63 mm  
 with bulb sheath  
 complete with O-RING  
 for Convection oven electric (ZANUSSI) ACV/E10  
 ECV/E10 - FCS101E - FCS102E - FCV/E10  
 FCV/E10-P - ZCV/E10



JUNO-RÖDER-SENKING 58995

**3755177 HEATING ELEMENT 24000W 400V**  
 immersed depth 590 mm  
 flange external  $\varnothing$  63 mm  
 with bulb sheath  
 complete with O-RING  
 for Convection oven electric (ZANUSSI) ACV/E10  
 ACV/E201 - ACV/E202 - ECV/E10 - ECV/E201  
 ECV/E202 - FCS101E - FCS102E - FCS201E  
 FCS202E - FCV/E10 - FCV/E201 - FCV/E202  
 ZCV/E10 - ZCV/E201 - ZCV/E202



JUNO-RÖDER-SENKING 02751



# JUNO-RÖDER-SENKING



Suitable for:

**3355722 HEATING ELEMENT 3000W 230V**  
 immersed length 330 mm - width 135 mm  
 flange 85x30 mm  
 for Convection oven electric (JUNO-RÖDER-SENKING)  
 for Convection oven electric (ZANUSSI)



JUNO-RÖDER-SENKING 214137

Suitable for:

**3186187 HEATING ELEMENT GASKET**  
 external dimensions 68x13 mm



JUNO-RÖDER-SENKING 237353

JUNO-RÖDER-SENKING 246294

**3355723 HEATING ELEMENT 3000W 230V**  
 immersed length 565 mm - width 150 mm  
 2 flanges 70x22 mm  
 for Convection oven electric (JUNO-RÖDER-SENKING)  
 for Convection oven electric (ZANUSSI)



JUNO-RÖDER-SENKING 214494

**3355718 HEATING ELEMENT 5600W 230V**  
 for boiler  
 immersed length 270 mm - width 60 mm  
 flange 80x28 mm  
 for Convection oven electric (JUNO-RÖDER-SENKING)  
 5511-3  
 for Convection oven electric (ZANUSSI)



JUNO-RÖDER-SENKING

**3355719 HEATING ELEMENT 5600W 380V**  
 immersed length 270 mm - width 60 mm  
 flange 80x28 mm  
 for Convection oven electric (JUNO-RÖDER-SENKING)  
 for Convection oven electric (ZANUSSI)



JUNO-RÖDER-SENKING 213742

JUNO-RÖDER-SENKING 214087

**3355721 HEATING ELEMENT 6000W 400V**  
 for boiler  
 immersed length 380 mm - width 60 mm  
 flange 80x28 mm  
 for Convection oven electric (JUNO-RÖDER-SENKING)



JUNO-RÖDER-SENKING 214608

JUNO-RÖDER-SENKING 231027

**3755240 HEATING ELEMENT 9000W 230V**  
 immersed depth 290 mm  
 flange external  $\varnothing$  63 mm  
 with bulb sheath  
 complete with O-RING  
 for Convection oven electric (ZANUSSI) ECV/E6  
 FCS061E - FCV/E6 - RCV/E6 - ZCV/E6



JUNO-RÖDER-SENKING 02835

## Lamps

### 3221255 FRAME FOR OVEN LAMP RECEPTACLE

external dimensions 140x72 mm  
for Convection oven (BERTO'S)  
for Convection oven (FOINOX)  
for Convection oven (INOXTREND)  
for Convection oven (MBM)  
for Convection oven (WHIRLPOOL)  
for Convection oven (ZANUSSI)



JUNO-RÖDER-SENKING 246391

### 3221256 GLASS FOR OVEN LAMP RECEPTACLE

external dimensions 112x65 mm  
max temperature 500°C  
for Convection oven (BERTO'S)  
for Convection oven (FOINOX)  
for Convection oven (INOXTREND)  
for Convection oven (JUNO-RÖDER-SENKING)  
for Convection oven (MBM)  
for Convection oven (WHIRLPOOL)  
for Convection oven (ZANUSSI)



JUNO-RÖDER-SENKING 284255

### 3221132 GREEN INDICATOR LAMP 230V

head  $\varnothing$  13.5 mm - hole  $\varnothing$  10 mm - 120°C  
universal application



JUNO-RÖDER-SENKING 245878

### 3221120 LAMP RECEPTACLE E14 25W 230V

for Convection oven electric (GEMINI FORNI)  
Series 2/M - 2/M1  
for Convection oven electric (MBM) FCE10 - FCE6  
FEMD107SC - FEMD109 - FEMD207SC - FEMD209  
FEMD67SC - FEMD69 - FEM107SC - FEM109  
FEM207SC - FEM209 - FEM67SC - FEM69 - FEP050  
FEP080 - FEP160  
for Convection oven gas (MBM) FCG10 - FCG6  
FGMD107SC - FGMD109 - FGMD207 - FGMD209  
FGMD67SC - FGM107SC - FGM109 - FGM207SC  
FGM209 - FGM67SC - FGM69 - FGP050 - FGP080  
FGP160



JUNO-RÖDER-SENKING 245882

### 3221060 LAMP RECEPTACLE WITH LAMP E14 25W 230V

lamp glass  $\varnothing$  42 mm  
mounting hole  $\varnothing$  38 mm  
max temperature 300°C  
for OVEN  
for Convection oven electric (SMEG) ALFA31V  
ALFA51X - ALFA51XGN - ALFA55X



JUNO-RÖDER-SENKING 212508

### 3221067 NEON LAMP FOR OVEN E10 2W 230V

dimensions  $\varnothing$  10x28 mm  
for OVEN



JUNO-RÖDER-SENKING 846804



Suitable for:

**3221068 NEON LAMP FOR OVEN E14 2W 380V**  
dimensions  $\varnothing$  13x30 mm  
for OVEN



JUNO-RÖDER-SENKING 565628

Suitable for:

**3221245 NEON LAMP FOR OVEN E14 230V**  
dimensions  $\varnothing$  13x30 mm  
for Convection oven (JUNO-RÖDER-SENKING)



JUNO-RÖDER-SENKING 565602

**3221250 NEUTRAL HALOGEN LAMP G4 10W 12V**  
for Convection oven electric (FAGOR) COE-061  
COE-101 - VE-061 - VE-101 - VPE-061 - VPE-101



JUNO-RÖDER-SENKING 565729

**3221095 ORANGE INDICATOR LAMP 230V**  
head  $\varnothing$  13.5 mm - hole  $\varnothing$  10 mm - 120°C  
universal application



JUNO-RÖDER-SENKING 245879

**3221041 OVEN LAMP E14 15W 230V**  
max temperature 300°C  
for OVEN - PIZZA OVEN



JUNO-RÖDER-SENKING 211020

JUNO-RÖDER-SENKING 565265

JUNO-RÖDER-SENKING 846098

JUNO-RÖDER-SENKING 211199

JUNO-RÖDER-SENKING 245812

JUNO-RÖDER-SENKING 568529

**3221061 OVEN LAMP E14 25W 230V**  
max temperature 300°C  
for Convection oven electric (EMMEPI) F2011GT-SP  
for Convection oven electric (KELVIN) NKE234  
NKE234S  
for Convection oven electric (SOGECO)  
Series MBS10.21 - Series MDS10.21  
Series MDS20.21  
for Convection oven gas (CONVOTHERM) OGS6.10



## Level regulators

**3341000 LEVEL ADJUSTER RL30/3ES/F/G**  
230V 50/60Hz  
for Convection oven (ZANUSSI) ACV - ECV  
Series FCS - Series FCV - FDV - ZCV



JUNO-RÖDER-SENKING 213810

JUNO-RÖDER-SENKING 245483



## Level sensors

**3341003 LEVEL PROBE  $\varnothing$  1/4" M - 110 mm**  
for Convection oven (ZANUSSI) - Series FCV



JUNO-RÖDER-SENKING 246029

**3341002 LEVEL PROBE  $\varnothing$  1/4" M - 114.5 mm**  
for Convection oven (ZANUSSI) - Series AOS



JUNO-RÖDER-SENKING 246028

## Microswitches

**3240406 MICROSWITCH 10A 250V**  
for Convection oven electric (JUNO-RÖDER-SENKING) 5717-3



JUNO-RÖDER-SENKING 245536

**3240123 MICROSWITCH 16A 250V**



JUNO-RÖDER-SENKING 212424

## Motors

**3240290 MAIN SHAFT SEALING GASKET**  
external  $\varnothing$  38 mm  
internal  $\varnothing$  16 mm  
height 17 mm  
for Convection oven electric (ZANUSSI) ACF/E10  
ACF/E102/1 - ACF/E20 - ACF/E202/1 - ACV/E10C4  
ACV/E10C6 - ACV/E102/1C4 - ACV/E102/1C6  
for Convection oven gas (ZANUSSI) ACF/G10  
ACF/G102/1 - ACV/G10C4 - ACV/G10C6  
ACV/G102/1C4 - ACV/G102/1C6 - ACV/G20C4  
ACV/G202/1C4 - ACV/G61C3 - JCF/G6



JUNO-RÖDER-SENKING 02699

**3240115 MOTOR HANNING L7ZAW4D-099 0.245Kw**  
230/415V 50/60Hz  
for Convection oven (FRIMA) CD101 - CD201 - CD6  
for Convection oven electric (HOBART) CS0611E  
for Convection oven electric (KÜPPERSBUSCH) ECD106  
ECD120  
for Convection oven electric (RATIONAL) CC101  
CC201 - CC6 - CD101 - CD20 - CD201 - CD6  
CM101 - CM20 - CM201 - CM6



JUNO-RÖDER-SENKING 280157

JUNO-RÖDER-SENKING 281073

**3240116 MOTOR HANNING L9CW4D-161 0.37/0.58Kw**  
2.85/1.65A - 1400rpm - 230/415V 50Hz  
for Convection oven electric (RATIONAL) CC20  
CD20 - CM20



JUNO-RÖDER-SENKING 280161

**3240287 MOTOR LM/FB80 4/6 0.11/0.35Kw 230V**  
50/60Hz - 1.3/2.7A - 900/1400rpm  
capacitor 16  $\mu$ F  
for Convection oven (ZANUSSI) - Series FCS  
Series FCV - Series JCF  
for Convection oven electric (ZANUSSI)  
ACV/E102/1C4



JUNO-RÖDER-SENKING 02748



Suitable for:

**3240262 MOTOR LM80/4 0.19Kw 230V 50/60Hz**  
1.3A - 1450/1750rpm  
for Convection oven electric (ZANUSSI)  
Series ACF/E - Series ACV/E - C7E4 - C7E6 - C7PE4  
Series FCF/E - FCS101E - Series FCV/E - FCV/E201  
FCV/E202 - Series ZCF/E - ZCV/E201 - ZCV/E202  
for Convection oven gas (ZANUSSI) - Series ACF/G  
ACF/G101 - Series ACV/G - Series FCF/G  
FCF/G101 - FCS061G - FCS101G - Series FCV/G  
FCV/G201 - FCV/G202 - Series ZCF/G - ZCV/G201  
ZCV/G202



JUNO-RÖDER-SENKING 02616

Suitable for:

**3240261 MOTOR LM80/4 0.35Kw 230V 50/60Hz**  
2.7A - 1400/1700rpm - capacitor 16 µf  
for 10 GRILLS versions  
for Convection oven (ZANUSSI) - Series FCF  
Series NCF - Series ZCF



JUNO-RÖDER-SENKING 02739

## Outlet solenoid valves and accessories

**3525021 BOILER MOTOR DRAIN VALVE**  
230V 50/60Hz  
fittings ø 3/4"FF  
for Convection oven (ZANUSSI) - Series AOS  
Series AOW - Series CS - Series ECV - Series EJM  
Series FCS - Series FCV - Series FCZ - Series RDR  
Series ZCV



JUNO-RÖDER-SENKING 02713

## OR and ORM gaskets

**3786008 O-RING 04112 BROWN VITON**  
for coffee group upper piston



JUNO-RÖDER-SENKING 02873

## Penetration probes

### 3397100 PENETRATION PROBE

2 wires - faston connection  
 probe length 140 mm  
 chamber internal cable 950 mm  
 chamber external cable 1500 mm  
 for Convection oven electric (ZANUSSI) FCS201E4  
 FCS202E4  
 for Convection oven gas (ZANUSSI) ACV/G201  
 ACV/G202 - ECV/G201 - ECV/G202 - FCS201G4  
 FCV/G20 - FCV/G201 - FCV/G202 - ZCV/G201  
 ZCV/G202



JUNO-RÖDER-SENKING

### 3397015 PENETRATION PROBE PT100

2 wires - faston fitting  
 probe length 140 mm  
 compartment internal cable length 1000 mm  
 compartment external cable length 1550 mm  
 for Convection oven electric (ZANUSSI) ACF/E20  
 ACV/E201 - ACV/E202 - ECV/E201 - ECV/E202  
 FCF/E20 - FCV/E201 - FCV/E202 - ZCF/E20  
 ZCV/E201 - ZCV/E202  
 for Convection oven gas (ZANUSSI) ACF/G20  
 ACV/G201 - ACV/G202 - ECF/G20 - ECV/G201  
 ECV/G202 - FCF/G20 - FCV/G201 - FCV/G202  
 ZCF/G20 - ZCV/G201 - ZCV/G202



JUNO-RÖDER-SENKING 236149

### 3397012 PENETRATION PROBE PT1000

2 wires - faston fitting  
 probe length 140 mm  
 compartment internal cable length 530 mm  
 compartment external cable length 1550 mm  
 for Convection oven electric (ZANUSSI) ACF/E10  
 ACF/E6 - ACV/E10 - ACV/E6 - ECF/E10 - ECF/E6  
 ECV/E10 - FCF/E10 - FCF/E6 - FCFE/10 - FCS061E  
 FCV/E10 - FCV/E6 - JCF/E10 - JCF/E6 - NCF/E10  
 NCF/E6 - NCV/E6 - RCF/E10 - RCV/E6 - RCVE101E4  
 RCV061E2 - ZCF/E10 - ZCF/E6 - ZCV/E10 - ZCV/E6  
 for Convection oven gas (ZANUSSI) ACF/G10  
 ACF/G101 - ACF/G6 - ACV/G10 - ACV/G6 - BCV/G6  
 ECF/G10 - ECF/G6 - ECV/G10 - ECV/G6 - FCF/G10  
 FCF/G6 - FCS061G - FCV/G10 - FCV/G6 - JCF/G10  
 JCF/G6 - NCF/G10 - NCF/G6 - RCF061G - RCF102G



JUNO-RÖDER-SENKING 02673

## Pilot burners and accessories

### 3020055 PILOT JET $\varnothing$ 0.35 mm



JUNO-RÖDER-SENKING 230931

### 3020010 TARGET PILOT BURNER SIT 2 FLAMES

supplied without sparking plug, nozzle and gasket  
 with thermocouple fitting  
 for Convection oven gas (ZANUSSI)



JUNO-RÖDER-SENKING 230156



Suitable for:

**3020006 THREE-FLAME PILOT BURNER SIT**  
multigas with jet  $\varnothing$  0.20 mm  
with 3 positions bracket



JUNO-RÖDER-SENKING 230584

Suitable for:

**3020012 TWO-FLAME PRINTED PILOT BURNER SIT**  
without sparking plug, gas nozzle and gasket  
thermocouple fitting included  
for Convection oven gas (ZANUSSI) FCF/G10 - FCF/G6



JUNO-RÖDER-SENKING

## Pressure switches

**3320051 ADJUSTABLE PRESSURE SWITCH  $\varnothing$  1/4" M**  
operating pressure regulation 5-20 mbar  
differential 3 mbar  
contact capacity 16(4)A 250V  
max operating temperature 85°C  
for Convection oven gas (ZANUSSI) ACV/G10  
ECV/G10 - ECV/G6 - FCS061G - FCS101G - FCS102G  
FCV/G10 - FCV/G6 - NCV/G10 - ZCV/G10 - ZCV/G6



JUNO-RÖDER-SENKING 245036

## Probes

**3397080 TEMPERATURE PROBE PT1000**  
2 wires - faston connection  
probe length 275 mm  
cable length 1800 mm  
for Convection oven (ZANUSSI) - Series ACV  
Series ECV - Series FCS - Series FCV - Series NCV  
Series RCV - Series ZCV  
for Convection oven electric (ZANUSSI) CS10GE4  
CS10GE6 - CS10LCE4 - CS10LCE6 - CS10ME4  
CS10ME6 - CS20GE4 - CS20GE6 - CS20LCE4  
CS20LCE6 - CS20ME4 - CS20ME6 - CS7GE4 - CS7GE6  
CS7LCE4 - CS7LCE6 - CS7ME4 - CS7ME6



JUNO-RÖDER-SENKING 02615

## Rotary switches

### 3057136 SELECTOR SWITCH 0-6 POSITIONS

5 cams - contact capacity 16A 250V - max 150°C  
 D-shaped pin  $\varnothing$  6x4.6  
 for OVEN 6-10-20 SHELVES  
 for Convection oven (ZANUSSI) - Series ACV  
 Series ECV - Series FCS - Series FCV - Series NCV  
 Series ZCV  
 for Convection oven electric (WHIRLPOOL) ACV/E10C2  
 ACV/E20C4 - ACV/E202/1  
 for Convection oven gas (WHIRLPOOL) ACV/G10C2  
 ACV/G20C4 - ACV/G202/1C4 - ACV/G61C3



JUNO-RÖDER-SENKING 02661

JUNO-RÖDER-SENKING 245029

### 3057111 SELECTOR SWITCH 4 POSITIONS

5 cams - contact capacity 16A 250V - max 150°C  
 D-shaped pin  $\varnothing$  6x4.  $\varnothing$  6 mm



JUNO-RÖDER-SENKING 231319

### 3057116 SELECTOR SWITCH 4 POSITIONS

14 cams - contact capacity 16A 250V - max 150°C  
 D-shaped pin  $\varnothing$  6x4.  $\varnothing$  6 mm



JUNO-RÖDER-SENKING 212243

## Solenoid valves

### 3120261 MULLER SOLENOID VALVE 230V $\varnothing$ 12 mm

solenoid valve 180° - 220/230V 50/60Hz - max 90°C  
 3/4" inlet -  $\varnothing$  12 mm outlet



JUNO-RÖDER-SENKING 231845

### 3120408 SOLENOID VALVE 230V $\varnothing$ 13.5 mm

solenoid valve 90° - 230V 50/60Hz - max 90°C  
 inlet 3/4" - 1 outlet  $\varnothing$  13.5 mm



JUNO-RÖDER-SENKING

### 3120013 SOLENOID VALVE 263 220/240V $\varnothing$ 10 mm

solenoid valve 90° - 220/240V 50/60Hz - max 90°C  
 inlet 3/4" - triple outlet  $\varnothing$  10 mm



JUNO-RÖDER-SENKING 02712

### 3120004 SOLENOID VALVE 319 220/240V $\varnothing$ 10 mm

solenoid valve 90° - 220/240V 50/60Hz - max 90°C  
 inlet 3/4" - outlet  $\varnothing$  10 mm



JUNO-RÖDER-SENKING 02613



# JUNO-RÖDER-SENKING



Suitable for:

**3120504 SOLENOID VALVE 319 24V ø 10 mm**  
solenoid valve 90° - 24V 50Hz - max 90°C  
inlet 3/4" - outlet ø 10 mm



JUNO-RÖDER-SENKING

Suitable for:

**3120006 SOLENOID VALVE 339 220/240V ø 10 mm**  
solenoid valve 90° - 220/240V 50/60Hz - max 90°C  
inlet 3/4" - dual outlet ø 10 mm



JUNO-RÖDER-SENKING 55444

**3120511 SOLENOID VALVE 350 24V ø 14 mm**  
solenoid valve 90° - 24V 50Hz - max 90°C  
3/4" inlet - ø 14 mm outlet



JUNO-RÖDER-SENKING

## Sparking and detection plugs

**3020060 ROUND SPARKING PLUG ø 7x44 mm**  
male faston M 4x1 mm  
model CB505/021 Junkers  
for model P502F  
total length 82 mm



JUNO-RÖDER-SENKING 249598

JUNO-RÖDER-SENKING 261005

## Thermocouples and accessories

**3440135 THERMOCOUPLE SIT M10x1 150 cm**



JUNO-RÖDER-SENKING 215781

**3440132 THERMOCOUPLE SIT M10x1 40 cm**



JUNO-RÖDER-SENKING 215783

**3440126 THERMOCOUPLE SIT M10x1 75 cm**



JUNO-RÖDER-SENKING 215780

**3440837 THERMOCOUPLE SIT M9x1 100 cm - 10 PCS**



JUNO-RÖDER-SENKING 215784





# JUNO-RÖDER-SENKING



Suitable for:

**3440037 THERMOCOUPLE SIT M9x1 100 cm.**



JUNO-RÖDER-SENKING 215784

Suitable for:

**3440837 THERMOCOUPLE SIT M9x1 100 cm - 10 PCS**



JUNO-RÖDER-SENKING 215784

## Thermostats

**3444411 SINGLE-PHASE BIPOLAR THERMOSTAT 90-102°C**

D-shaped pin  $\varnothing$  6x4.6 mm  
covered capillary length 1440 mm - 16A 230V  
bulb  $\varnothing$  3x335 mm - with stuff.gland coupling M8x1  
with tank sealing coupling M14x1  
for Steam oven (JUNO-RÖDER-SENKING) - Series 55

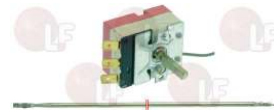


JUNO-RÖDER-SENKING 215672

JUNO-RÖDER-SENKING 215692

**3444410 SINGLE-PHASE THERMOSTAT 0-255°C**

D-shaped pin 6x4.6 mm  
covered capillary length 1440 mm - 16A 230V  
bulb  $\varnothing$  3x160 mm  
for Steam oven (JUNO-RÖDER-SENKING) - Series 55



JUNO-RÖDER-SENKING 215671

**3444415 SINGLE-PHASE THERMOSTAT 176°C**

with manual reset  
covered capillary length 1450 mm - 16A 380V  
bulb  $\varnothing$  4x110 mm - with bulb coupling  $\varnothing$  8.6x32 mm  
for Steam oven (JUNO-RÖDER-SENKING) - Series 50  
Series 54 - Series 55



JUNO-RÖDER-SENKING 213150

**3444413 SINGLE-PHASE THERMOSTAT 50-250°C**

D-shaped pin 6x4.6 mm  
covered capillary length 2400 mm - 16A 230V  
bulb  $\varnothing$  3x160 mm  
for Steam oven (JUNO-RÖDER-SENKING) - Series 50  
Series 54



JUNO-RÖDER-SENKING 215693

**3444414 SINGLE-PHASE THERMOSTAT 50-250°C**

D-shaped pin  $\varnothing$  6x4.6 mm  
covered capillary length 1430 mm - 16A 230V  
bulb  $\varnothing$  3x160 mm - with adapter nipple band M9x1  
for Steam oven (JUNO-RÖDER-SENKING) - Series 50  
Series 54 - Series 55



JUNO-RÖDER-SENKING 232908

**3444753 SINGLE-PHASE THERMOSTAT 78°C**

with automatic reset  
covered capillary length 900 mm - 16A 230V  
bulb  $\varnothing$  3x230 mm  
for Convection oven (ZANUSSI) - Series FCV  
Series FCVA - Series FDV



JUNO-RÖDER-SENKING 055367



# JUNO-RÖDER-SENKING



Suitable for:

**3444756 THREE-PHASE THERMOSTAT 100-650°C/100-680**  
2 temperatures  
complete with switch  
D-shaped pin  $\varnothing$  6x4.6 mm  
covered capillary length 1200 mm - 16A 230V  
bulb  $\varnothing$  3.1x230 mm



JUNO-RÖDER-SENKING

**3444354 THREE-PHASE THERMOSTAT 350°C**  
with manual reset  
capillary length 1120 mm - 10A 400V  
bulb  $\varnothing$  3x190 mm  
for Convection oven electric (SMEG) ALFA135X  
ALFA135X1 - ALFA151X - ALFA161X - ALFA200X



JUNO-RÖDER-SENKING 212841

Suitable for:

**3444752 THREE-PHASE THERMOSTAT 30-350°C**  
D-shaped pin 6x4.6 mm  
covered capillary length 880 mm - 16A 230V  
bulb  $\varnothing$  4x128 mm  
for Convection oven (JUNO-RÖDER-SENKING)



JUNO-RÖDER-SENKING 293586

**3444452 THREE-PHASE THERMOSTAT 50-450°C**  
D-shaped pin 6x4.6 mm  
capillary length 1200 mm - 10A 400V  
bulb  $\varnothing$  4x228 mm



JUNO-RÖDER-SENKING 319723

## Timers

**3446070 TIMER P205 2 CAMS 230V 50/60Hz**  
cycle 144 minutes - D-shaped pin  $\varnothing$  6x4.6 mm  
for Convection oven (ZANUSSI) - Series FCF  
Series FCV - Series JCF  
for Convection oven electric (ZANUSSI) FCF/E6  
RCF061E



JUNO-RÖDER-SENKING 55366

**3446001 TIMER 120 MINUTES**  
complete with silk-screen printed plate  
mechanical timer with sound alarm  
mechanical movement with balance wheel  
manual left hand positioning possible  
120 minutes manually set cycle  
bipolar with contact capacity 16(3)A 250V  
max temperature 125°C  
D-shaped pin  $\varnothing$  6x4.6 mm  
for Convection oven electric (ZANUSSI) FCF/E4  
FCF/E4D - FCFE202 - FCFE4PH - FCFE40 - FCFE40D  
FCFE40F - FCFE40UK - 4238N



JUNO-RÖDER-SENKING 252136

JUNO-RÖDER-SENKING 252227



# JUNO-RÖDER-SENKING



Suitable for:

Suitable for:

**3446095** **TIMER 120 MINUTES CR5 M230**  
manually set mechanical timer  
manually set cycle 120 minutes  
2 poles with contact capacity 16(4)A 250V  
max temperature 120°C  
D-shaped pin ø 6x4.6 mm  
for Convection oven (ZANUSSI)

**3446094** **TIMER 60 MINUTES CR5 M229**  
manually set mechanical timer  
manually set cycle 60 minutes  
2 poles with contact capacity 16(4)A 250V  
max temperature 120°C  
D-shaped pin ø 6x4.6 mm  
for Convection oven (WHIRLPOOL)  
for Convection oven (ZANUSSI)



JUNO-RÖDER-SENKING 212616

JUNO-RÖDER-SENKING 212606

**3446096** **TIMER 60 MINUTES CR5 M231**  
manually set mechanical timer  
manual position possible  
manually set cycle 60 minutes  
2 poles with contact capacity 16(4)A 250V  
max temperature 120°C  
D-shaped pin ø 6x4.6 mm  
for Convection oven



JUNO-RÖDER-SENKING